

Having challenges with your connectivity is now a thing of the past

Build the network of the future, with Wi-Fi 7



Businesses today face **significant hurdles** with their wireless networks. Whether you operate from a single location, or have multiple sites to consider, our **Wi-Fi 7** solution has been developed specifically to **tackle these challenges** head-on.

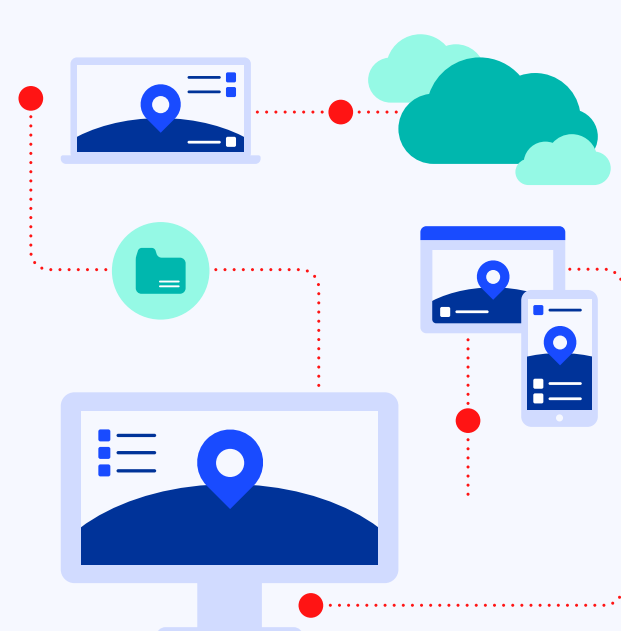
Addressing today's challenges

Network congestion

With the explosion of devices connected to the network, current Wi-Fi standards are strained, which can lead to unreliable connections and slow speeds.

The solution

By making use of advanced features like 320 MHz bandwidth and 4096-QAM, Wi-Fi 7 can manage high volumes of network traffic much more effectively.



Security vulnerabilities

Older Wi-Fi standards pose a persistent threat as they risk unauthorised access to the network and data breaches.

The solution

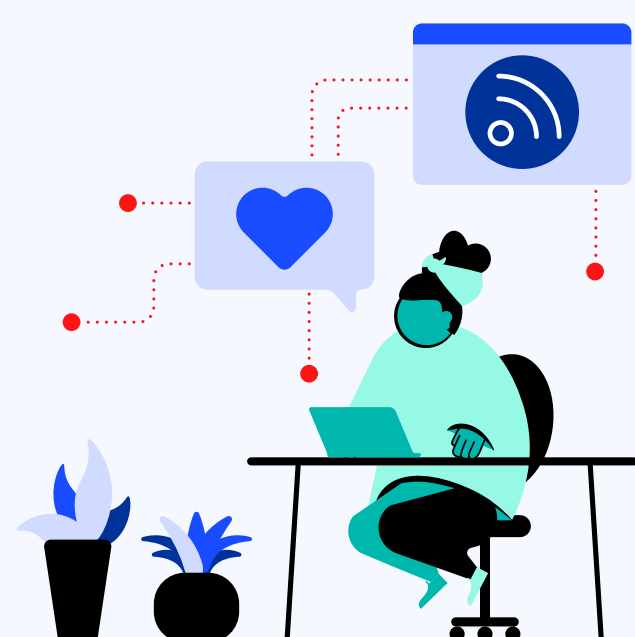
Wi-Fi 7 uses stronger security measures, such as WPA3, to better protect against these threats.

Performance in high-density environments

Crowded areas, like airports as an example, can create latency issues, which impact the performance of real-time applications like VoIP or video calls.

The solution

These environments are perfect for Wi-Fi 7's Multi-Link Operation (MLO) feature come into play. This reduces interference and ensure stable connections for all users of the network.



Network management complexity

Managing modern wireless networks can be tough for IT teams that may lack specialist personnel, or lack the resources needed to skill-up their team members.

The solution

Thanks to the introduction of Multi-AP Coordination, network management with Wi-Fi 7 has been made much easier for IT teams, which contributes to a better experience for all users.

Our **Wi-Fi 7 solution** is engineered to **give your business** with that extra competitive kick to **help your succeed**:

- ▶ **High-Performance connectivity:** Tri-band operation with advanced spatial streams for premium enterprise performance.
- ▶ **Flexible frequency use:** Dual 5 GHz and 6 GHz mode provides additional capacity and allows for customised frequency allocation.
- ▶ **Simplified management:** Unified licensing and centralised control for both cloud and on-premises environments.
- ▶ **AI-Driven optimisation:** Automated deployment and performance tuning with minimal manual effort.
- ▶ **Smart workplace integration:** Supports location services, asset tracking, and IoT connectivity.
- ▶ **Proactive network assurance:** Deep visibility and issue resolution through integrated tooling.
- ▶ **Global deployment ready:** Single hardware SKU designed for global use, simplifying procurement and deployment for multinational organisations.



Connectivity for an evolving world!

Speak with a Networking specialist at Logicalis to deliver a **high performance Wi-Fi 7 network** that can ensure that issues with your **network's connectivity** is a thing of the past.